



**Sure Flow
Equipment Inc.**

FOOT VALVES

www.sureflowequipment.com



2010

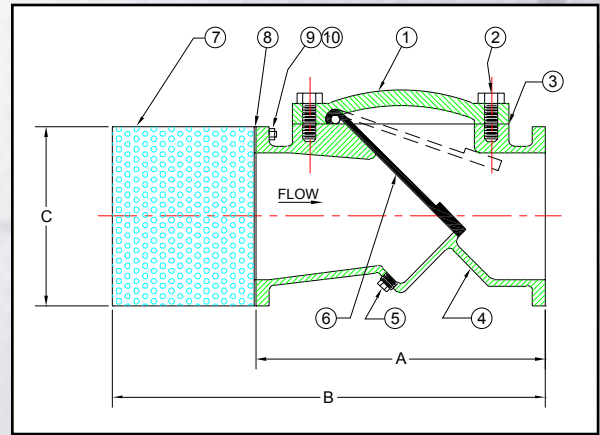
ELASTIC SWING FOOT VALVES

FVCEXF125 - Ductile Iron

Class 125 Flanged End Connections



The Elastic Swing Foot Valve is standard with a ductile iron body, ASME Class 125 flanges and is suitable for municipal and industrial applications. The internal body is epoxy coated. Special coatings are available upon request. The one-piece molded disc has a steel reinforced insert to ensure closure, but while in the open position will allow 100% uninterrupted flow. The one-piece disc hinge and flapper can be repaired without removal of the valve from the line. The Elastic Swing Foot Valve is designed for continuous flow applications and is not recommended for reciprocating pumps. The Elastic Swing Foot Valve can be installed in a vertical or horizontal pipeline.



Notes:

- Valve comes standard with 1/8" perf. Stainless Steel Screen. Options are available.
- Horizontal Flow:** Valve must be installed with cover on top to ensure proper operation.

Manufacturer reserves the right to modify dimensions, materials, or design. Consult factory for certification.

		Construction									
Item		1	2	3	4	5	6	7	8	9	10
Description		Cover	Cover Bolts	Gasket	Cast Body	Drain	Disc	Screen Assembly	Plate Flange	Studs	Nuts

Size		Dimensions (Inches)					Drain Size	Cv	Shipping Weight (LBS)
Inches	Prefix	A	B	C					
2	0200	8	10 1/2	6 1/4		3/4	76	36	
2 1/2	0250	8 1/2	11	7 1/4		3/4	124	46	
3	0300	9 1/2	12	7 3/4		3/4	180	55	
4	0400	11 1/2	14	9 1/4		1	352	84	
5	0500	13 3/4	16 3/4	10 1/4		1	578	120	
6	0600	15	19 1/2	11 1/4		1 1/4	832	138	
8	0800	19 1/2	25	13 3/4		1 1/2	1520	300	
10	1000	24 1/2	31	16 1/4		2 1/2	2440	630	
12	1200	27 1/2	35	19 1/4		2 1/2	3680	852	
14	1400	31	39 1/2	21 1/4		2 1/2	5280	1032	
16	1600	31 15/16	41 7/16	23 3/4		2 1/2	6960	1308	
18	1800	35 15/16	47 7/16	25 1/4		3	8960	1740	
20	2000	39 15/16	55 7/16	27 3/4		3	11360	1890	
24	2400	47 15/16	65 7/16	32 1/4		3	16800	3120	

Ordering Information

Example: Include full description

Size Model
(Prefix) Number
0400 FVCEXF125

4" Ductile Iron Flanged Elastic Swing Foot Valve,
Buna-N with Steel Disc.

Operating Pressures and Temperatures		
Type	Size	psi @ Temp WOG
FVCEXF125	2" - 12"	200 @ 150 °F
	14" - 24"	150 @ 150 °F



Sure Flow
Equipment Inc.

Toll Free: 1-800-263-8251 Toll Free Fax: 1-800-876-1164
International: 1-905-335-1350 International Fax: 1-905-332-4993
Email: info@sureflowequipment.com www.sureflowequipment.com

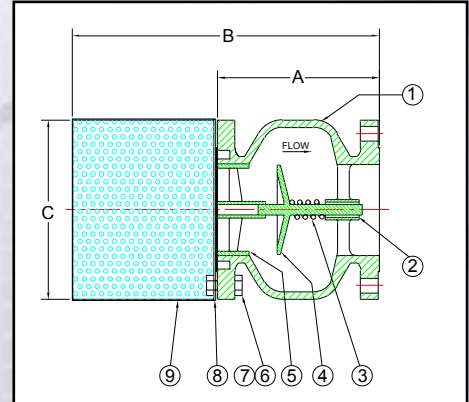
SILENT SEAT FOOT VALVES

FV125 - Cast Iron
FV150 / FV150SS - Cast Steel / Cast Stainless Steel

Flanged End Connections



The Sure Flow Silent Seat Foot Valve has low head loss through its full ported body area and heavy duty stainless steel basket screening. As pressure increases, the Buna-N Quad Ring is compressed slightly and the disc makes contact with the metal portion of the valve seat, preventing any further compression of the ring. The Buna-N Quad Ring will continue to provide "drop-tight seating" during the higher pressure ranges without damage from the increased pressure loading. A foot valve should be used with basket strainers and check valves.



Standard Features

- The seating design provides positive shut-off at all pressure ranges without additional loading on the seal.
- A Buna-N Quad Ring is standard on Foot Valves size 6" and larger.
- Valve comes standard with 1/8" perf. Stainless Steel Screen. Options are available.
- Heavy duty stainless steel screening, with flow area 3 to 4 times that of pipe area.
- Silent operation, by design of disc, stroke and linear closing characteristics.

Notes:

Manufacturer reserves the right to modify dimensions, materials, or design. Consult factory for certification.

		Construction								
Item		1	2	3	4	5	6	7	8	9
Description		Body	Bushing	Spring	Plug	Quad Ring	Studs	Nuts	Plate Flange	Screen Assembly

Dimensions (Inches)														
Size		A				B				C		Cv	Shipping Weight (LBS)	
Inches	Prefix	125	150	125	150	125	150	125	150	125	150			
2	0200	6 1/4	6 1/4	9 1/4	9 1/4	6 1/4	6 1/4	50		31	24			
2 1/2	0250	7	7	10	10	7 1/4	7 1/4	84		46	34			
3	0300	7 1/2	7 5/8	10 5/8	10 3/4	7 3/4	7 3/4	118		53	45			
4	0400	8 1/2	8 1/2	11 1/2	11 1/2	9 1/4	9 1/4	212		88	70			
5	0500	9 1/2	-	13 1/2	-	10 1/8	-	344		123	-			
6	0600	10 1/2	10 1/2	15 1/2	15 1/2	11 1/4	11 1/4	484		153	114			
8	0800	13 1/2	12	18	16 1/2	13 3/4	13 3/4	884		272	216			
10	1000	16 1/4	14	21	18 3/4	16 1/4	16 1/4	1360		425	340			
12	1200	20 1/4	18	26	23 3/4	19 1/4	19 1/4	2060		716	577			
14	1400	22 3/4	-	31 1/4	-	21 1/4	-	2680		1138	-			
16	1600	24 3/4	-	34 1/4	-	23 3/4	-	3440		1420	-			
18	1800	22 1/2	-	34	-	25 1/4	-	4475		1590	-			
20	2000	24	-	39 1/2	-	27 3/4	-	5675		1989	-			
24	2400	24	-	41 1/2	-	32 1/4	-	8450		4480	-			

Ordering Information

Example: Include full description

Size Model
 (Prefix) Number
1200 FV125

12" Cast Iron Silent Seat Flanged Foot Valve, Buna-N seat.

Operating Pressures and Temperatures

Type	Size	psi @ Temp WOG
FV125	2" - 12"	200 @ 150 °F
	14" - 24"	150 @ 150 °F
FV150	2" - 12"	285 @ 100 °F
FV150SS	2" - 12"	275 @ 100 °F



Toll Free: 1-800-263-8251 Toll Free Fax: 1-800-876-1164
 International: 1-905-335-1350 International Fax: 1-905-332-4993
 Email: info@sureflowequipment.com www.sureflowequipment.com



www.sureflowequipment.com

Sure Flow Equipment Inc. – Limited Warranty

All products are warranted to be free of defects in material and workmanship for a period of one year from the date of shipment, subject to below. **All custom products are not subject to return, credit or refund.**

If the purchaser believes a product to be defective, the purchaser shall:

- Notify the manufacturer **within ten (10) days after receipt of merchandise**, state the alleged defect and request permission to return the product. Merchandise will not be accepted for return without a "Return Code" clearly marked on the outside of the package. Contact the office to obtain a return code. **Merchandise will not be accepted for return or credit later than six (6) months after invoicing.**
- If permission is given, return the product with the transportation prepaid. Collect shipments will not be accepted. Goods must be returned **prepaid**.

If a shipment is received in a damaged or deficient condition, a claim must be filed with the delivering carrier and noted on the freight bill before you accept the merchandise. All other claims must be made in writing and received by Sure Flow Equipment Inc. within ten (10) days after receipt of merchandise.

If the product is accepted for return and found to be defective, the manufacturer will, at its discretion, either repair or replace the product, F.O.B. factory, within 60 days of receipt, or issue credit for the purchase price.

Sure Flow Equipment Inc. shall not be liable for failure to deliver or delays in delivering occasioned by acts of God, war, labor difficulties, inability to obtain materials or any other causes whatsoever beyond our control.

Other than to repair, replace or credit as described above, purchaser agrees that manufacturer shall not be liable for any loss, costs, expenses, or damages of any kind arising out of the product, its use, installation or replacements, labeling, instructions, information or technical data of any kind, description of product use, sample or model, warnings or lack of any of the foregoing.

NO OTHER WARRANTIES, WRITTEN OR ORAL, EXPRESS OR IMPLIED, INCLUDING THE WARRANTIES OF FITNESS FOR A PARTICULAR PURPOSE AND MERCHANTABILITY, ARE MADE OR AUTHORIZED. NO AFFIRMATION OF ACT, PROMISE, DESCRIPTION OF PRODUCT OR USE OR SAMPLE OR MODEL SHALL CREATE ANY WARRANTY FROM MANUFACTURER, UNLESS SIGNED BY THE PRESIDENT OF MANUFACTURER.

CANCELLATIONS:

Cancelled orders will be subject to a charge of at least 35%.

Cancelled custom orders will be subject to a charge of 100% of quoted price.

SPECIAL DOCUMENTATION: A charge will apply for non-standard, special documentation requests such as Material Test Reports (MTR's) and Certificates of Conformance (COC's).

MINIMUM BILLING: \$100.00 NET

Product shipping weights are approximate and subject to variances depending on packaging methods/requirements.



5010 North Service Rd.
Burlington, ON L7L 5R5
Tel: 905-335-1350 Fax: 905-332-4993



P.O. Box 321
Tonawanda, NY 14151-0321
Tel: 1-800-263-8251 Toll Free Fax: 1-800-876-1164

Email: info@sureflowequipment.com
Web Site: www.sureflowequipment.com